



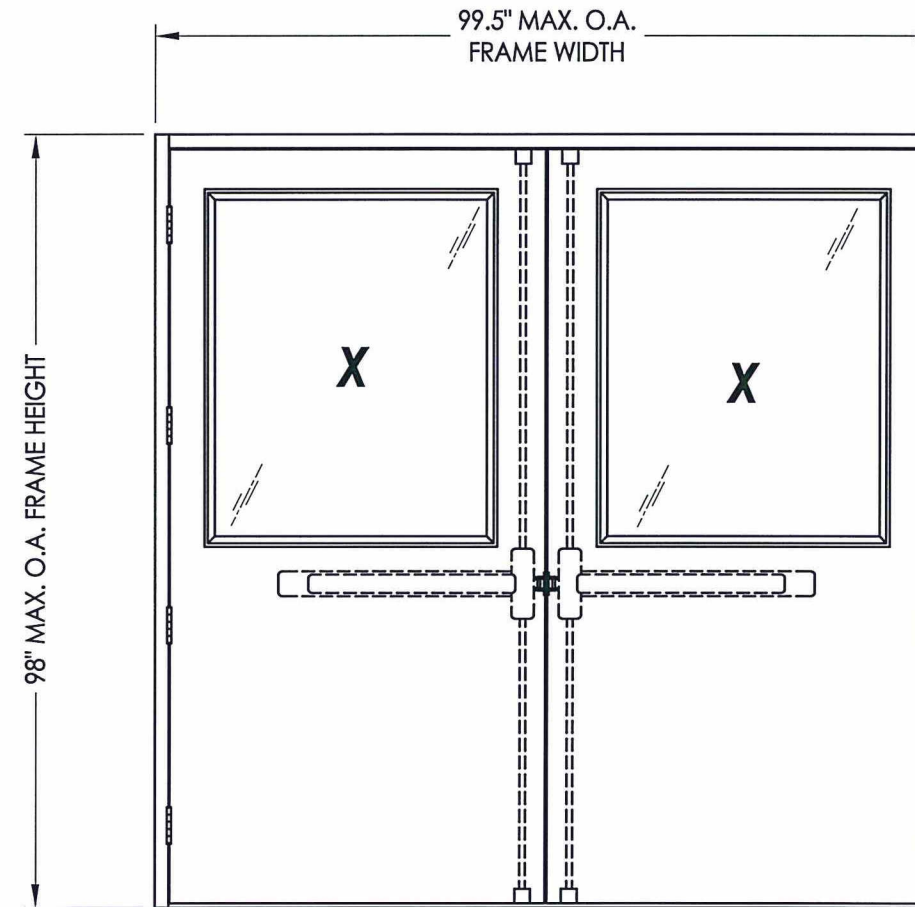
CLINE ALUMINUM DOORS, INC.
 112 32nd AVENUE WEST, BRADENTON, FL 34205-8096
 Telephone (800) 648-6736

SERIES 200BE FRP DOUBLE DOOR OUTSWING "IMPACT"

GENERAL NOTES

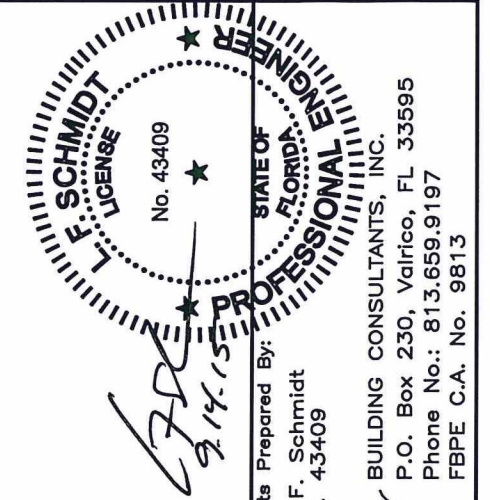
1. This product has been evaluated and is in compliance with the 5th Edition (2014) Florida Building Code (FBC) structural requirements excluding the "High Velocity Hurricane Zone" (HVHZ).
2. Product anchors shall be as listed and spaced as shown on details. Anchor embedment to base material shall be beyond wall dressing or stucco.
3. When used in areas requiring wind borne debris protection this product complies with Section 1609.1.2 of the FBC and does not require an impact resistant covering. This product meets missile level "D" and includes Wind Zone 4 as defined in ASTM E 1996 and Section 1609.1.2.2 of the FBC.
4. For 2x stud framing construction, anchoring of these units shall be the same as that shown for 2x buck masonry construction.
5. Site conditions that deviate from the details of this drawing require further engineering analysis by a licensed engineer or registered architect.

TABLE OF CONTENTS	
SHEET#	DESCRIPTION
1	Typical elevations, design pressures & general notes
2	Door panel details and glazing detail
3	Horizontal cross sections
4	Vertical cross sections
5	Buck anchoring
6	Frame anchoring
7	Buck anchoring
8	Frame anchoring
9	Bill of materials and components



GLAZED DOOR PANEL
 Opaque panel also approved

LOCK HARDWARE	MAX. FRAME DIMENSION	MAX. DOOR D.L.O. DIMENSION	DESIGN PRESSURE (PSF)	
			POSITIVE	NEGATIVE
YALE 7180(F)TD MULTI-POINT EXIT DEVICE	76.0" x 88.0"	22.63" X 32.63"	+90.0	-90.0
	99.5" x 98.0"	34.88" X 44.88"	+80.0	-80.0



Documents Prepared By:
 Lyndon F. Schmidt
 P.E. No. 43409

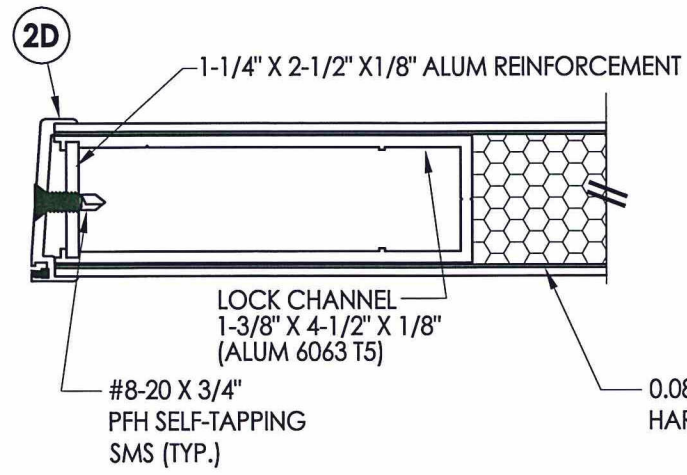
R.W. BUILDING CONSULTANTS, INC.
 P.O. Box 230, Valrico, FL 33595
 Phone No.: 813.659.9197
 FBPE C.A. No. 9813

PRODUCT: CLINE DOORS
 PART OR ASSEMBLY: TYPICAL ELEVATION, DESIGN PRESSURES & GENERAL NOTES

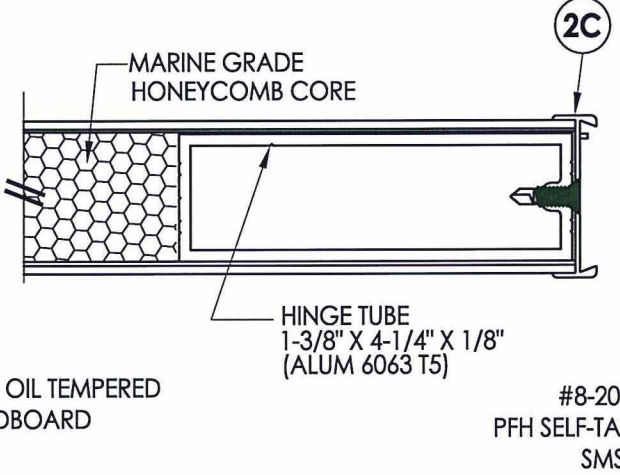
REVISIONS	
NO.	DATE
2	9/9/15
1	1/27/15

DATE: 9/5/13
 SCALE: N.T.S.
 DWG. BY: JK
 CHK. BY: LFS
 DRAWING NO.: FL-6336.7
 SHEET 1 OF 9

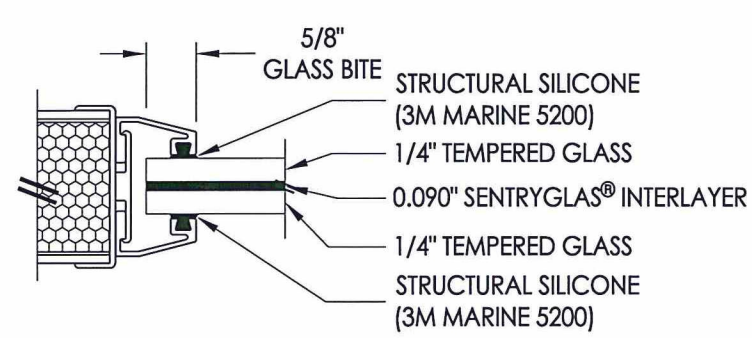
R:\Clients\Cline Aluminum Doors PERMANENTVA - Florida Product Approval\FL-6336C - Drawings\Current\FL-6336.5-8.dwg, 2.3



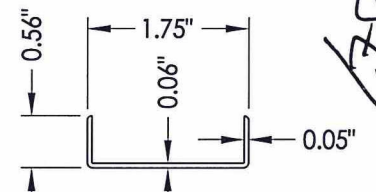
1 HORIZONTAL CROSS SECTION



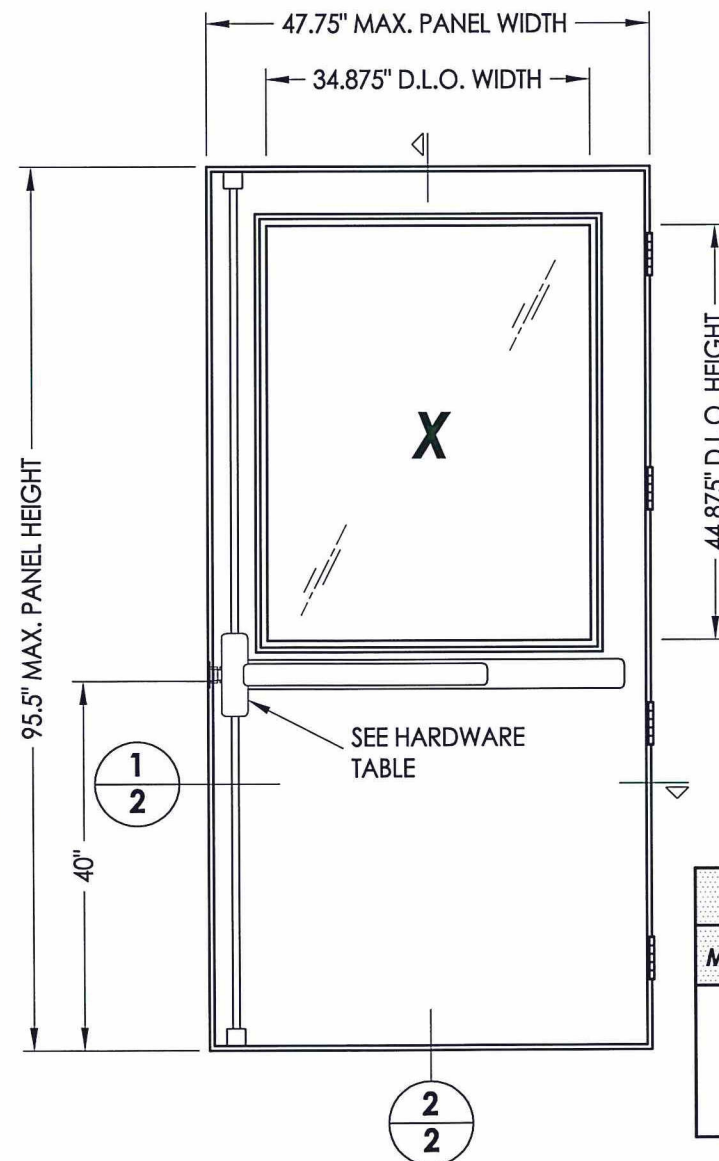
2 HORIZONTAL CROSS SECTION



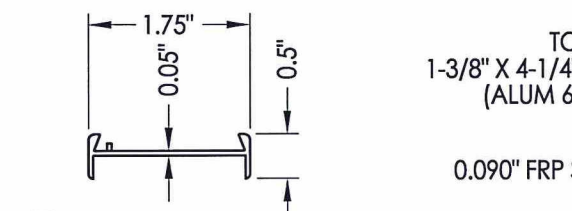
G1 GLAZING DETAIL



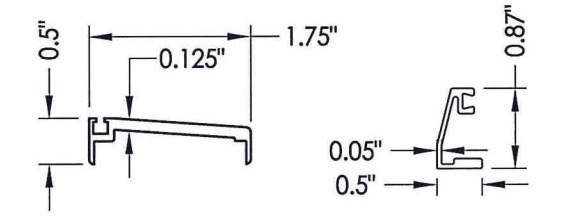
2E TOP AND BOTTOM CAP
 6063-T5 ALUM.



40 GLAZED DOOR PANEL

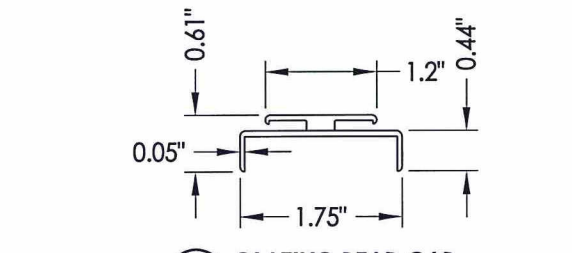


2C HINGE SIDE CAP
 6063-T5 ALUM.



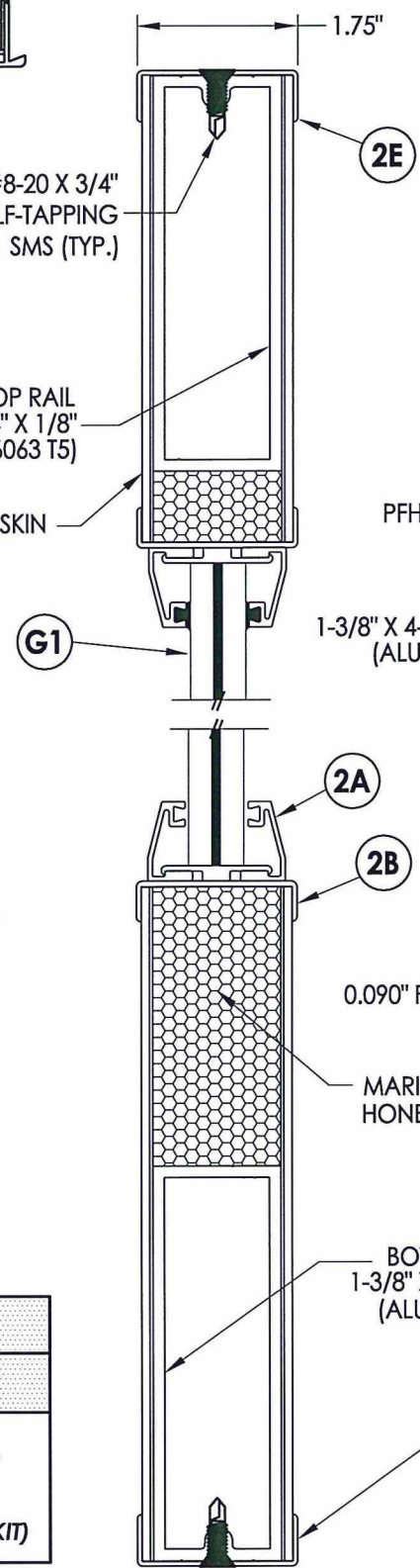
2D LATCH SIDE CAP
 6063-T5 ALUM.

2A GLAZING BEAD
 6063-T5 ALUM.

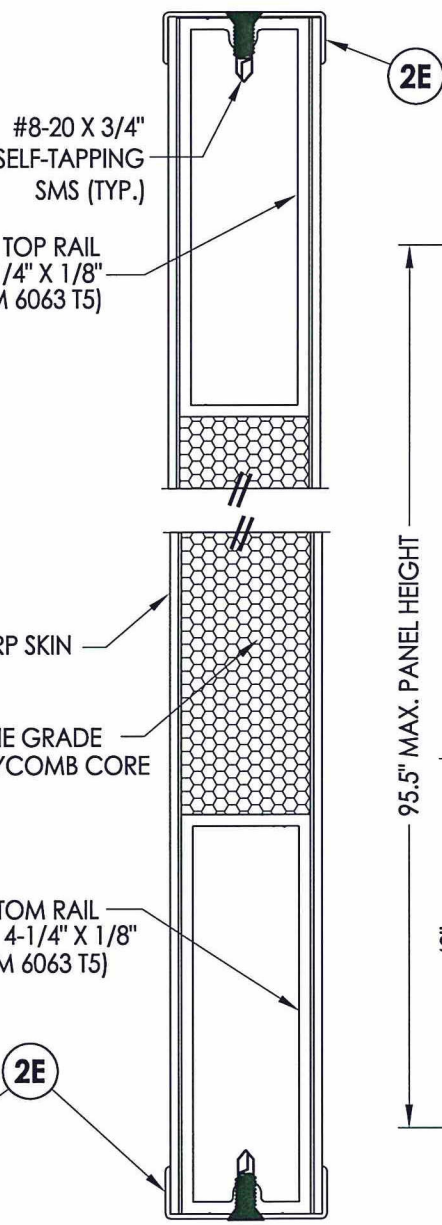


2B GLAZING BEAD CAP
 6063-T5 ALUM.

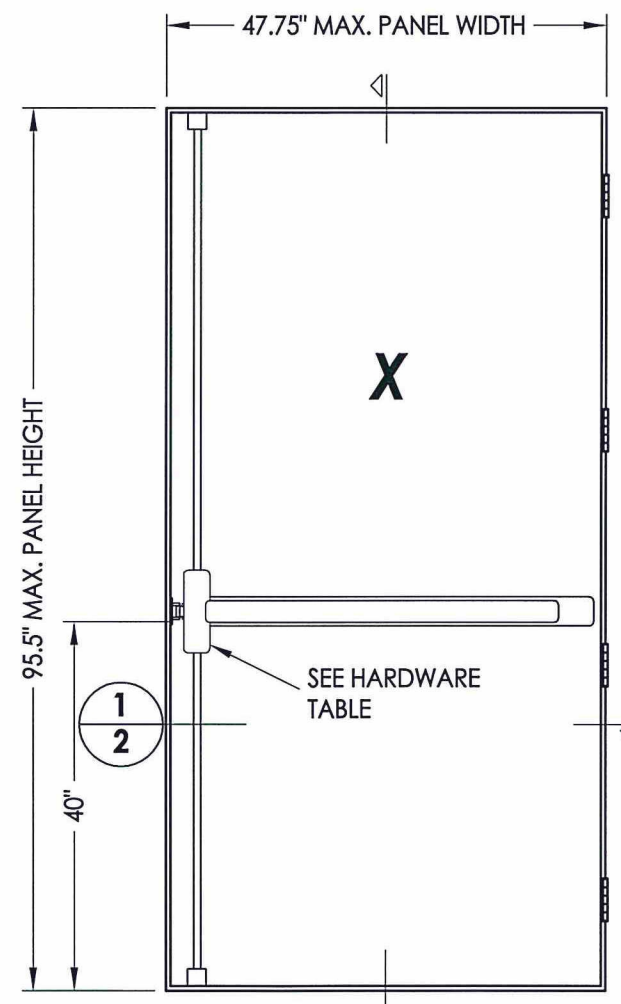
HARDWARE TABLE	
MANUFACTURER	MODEL
YALE	YALE 7180(F)TD MULTI-POINT EXIT DEVICE (3-POINT AUTO LATCHING SYSTEM w/ SQUAREBOLT® DEADBOLT, SURFACE VERTICAL RODS & ANTI-PRY BRACKET KIT)



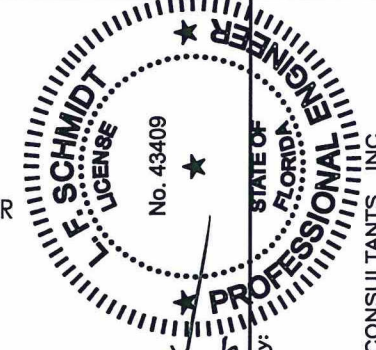
2 VERTICAL CROSS SECTION
 2 Glazed Shown



3 VERTICAL CROSS SECTION
 2 Opaque Shown



40 OPAQUE DOOR PANEL



Documents Prepared By:
 Lyndon F. Schmidt
 P.E. No. 43409

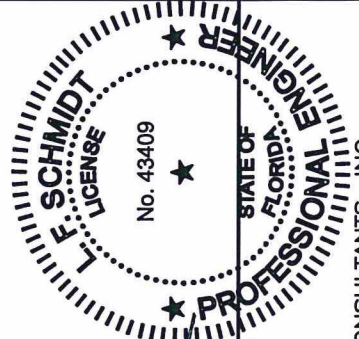
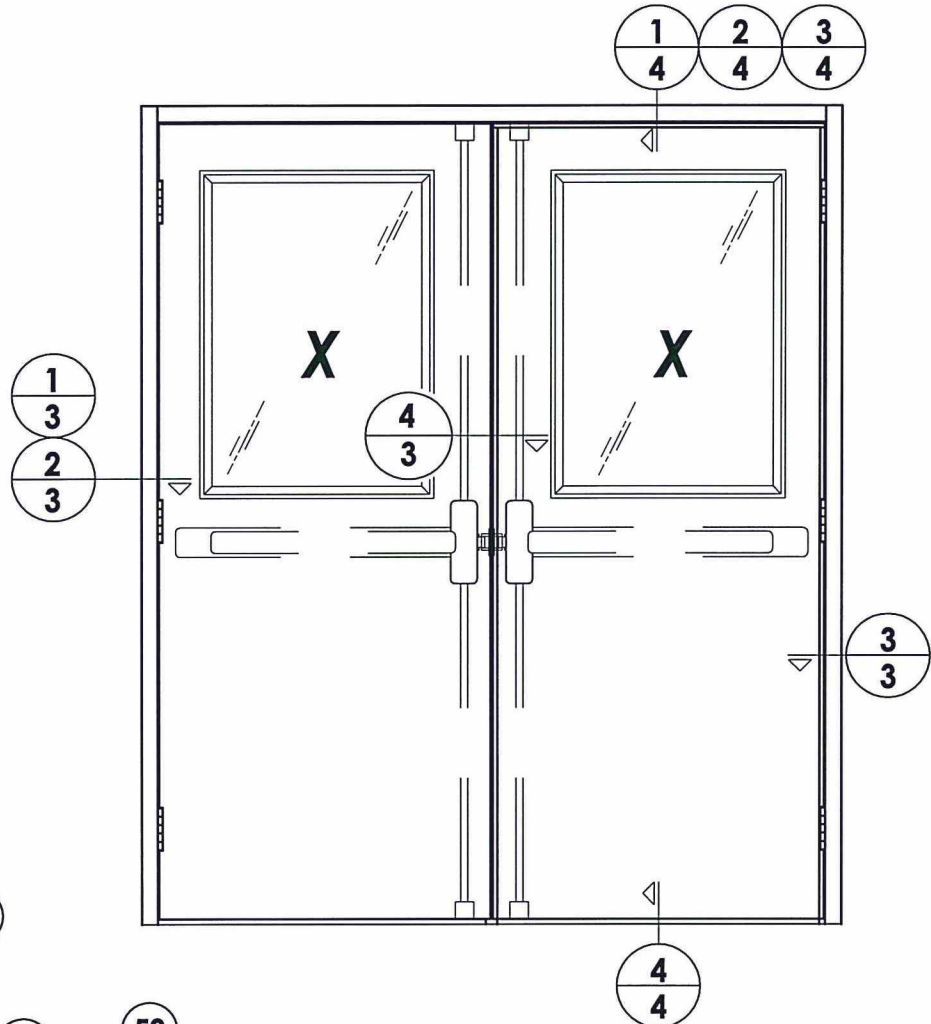
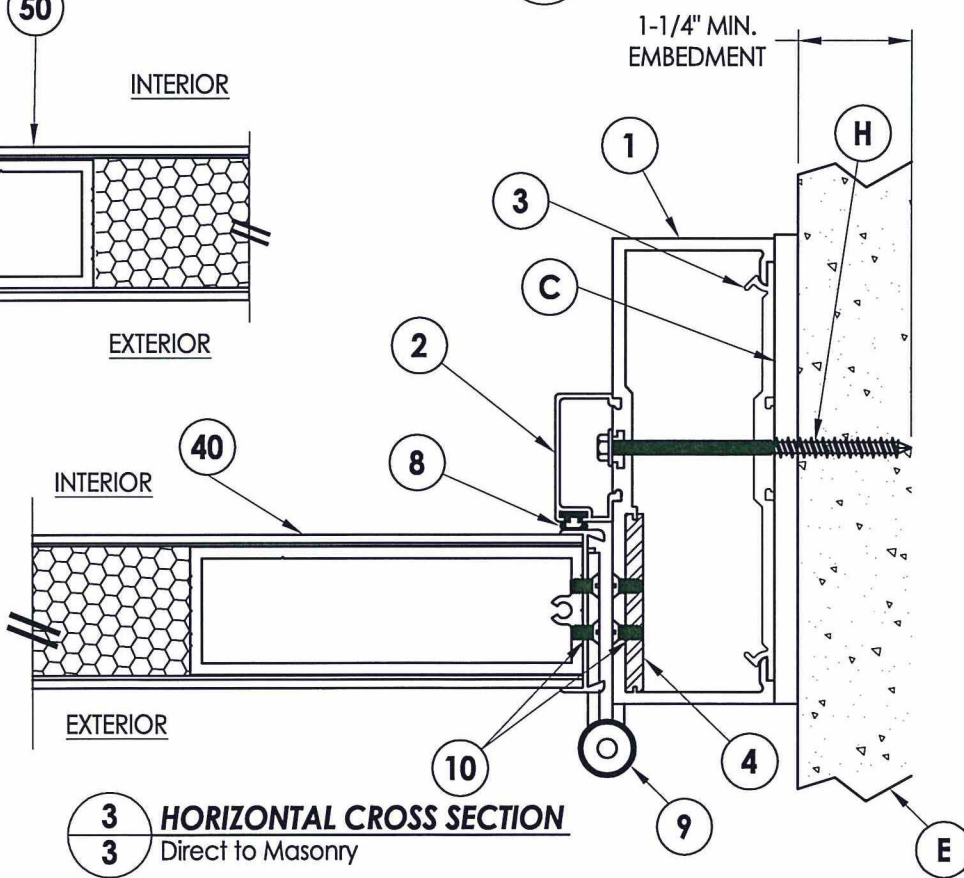
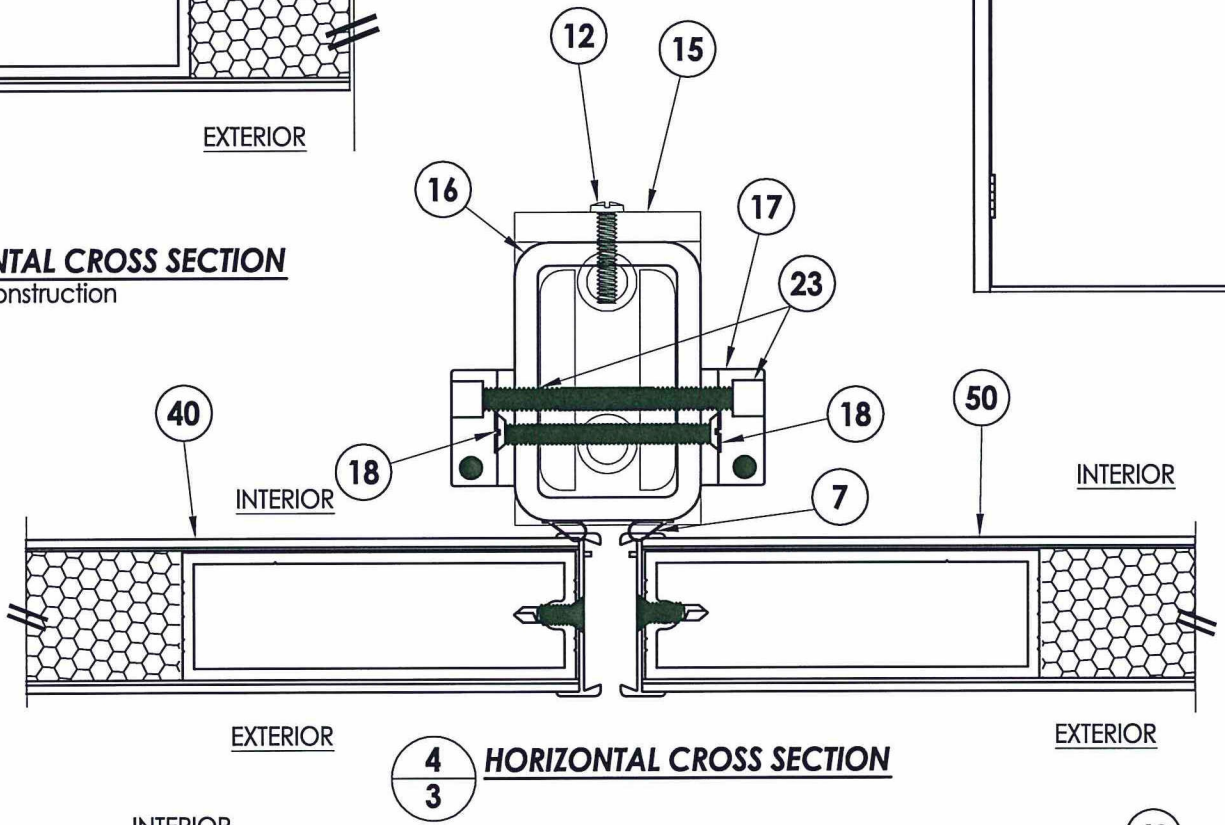
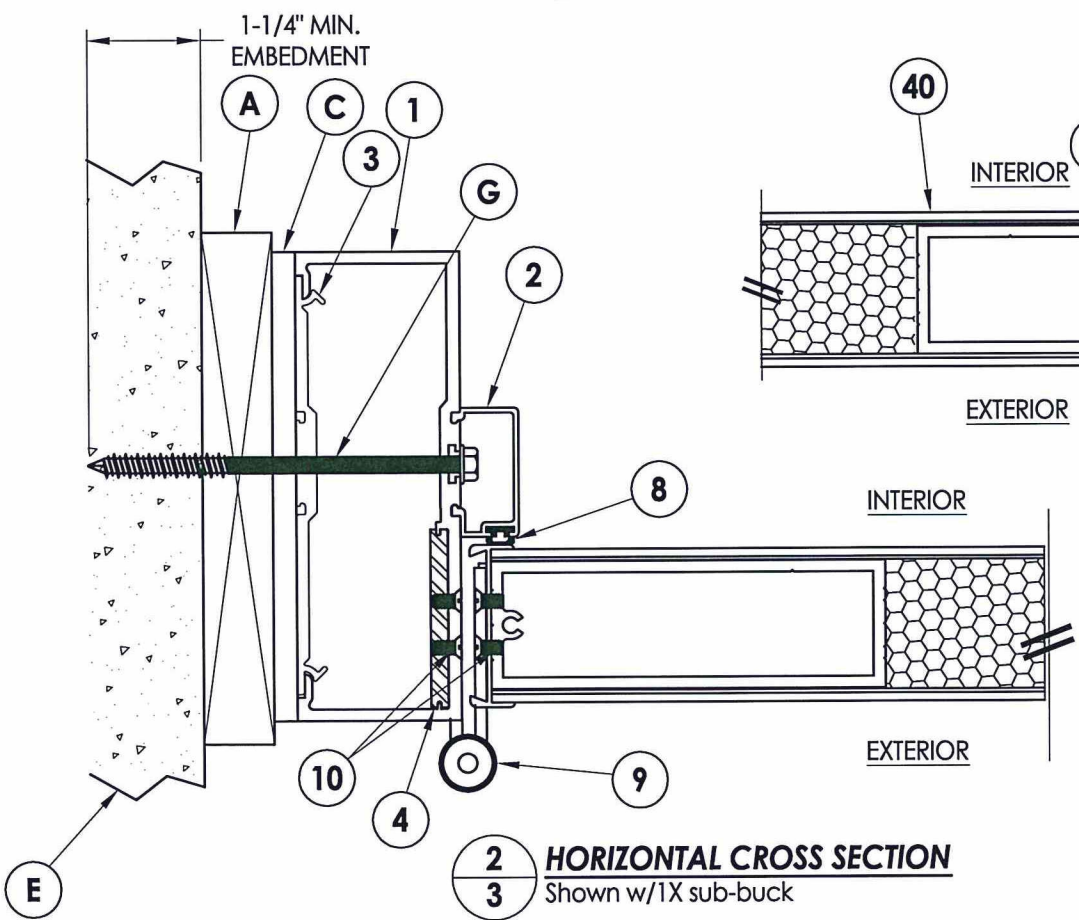
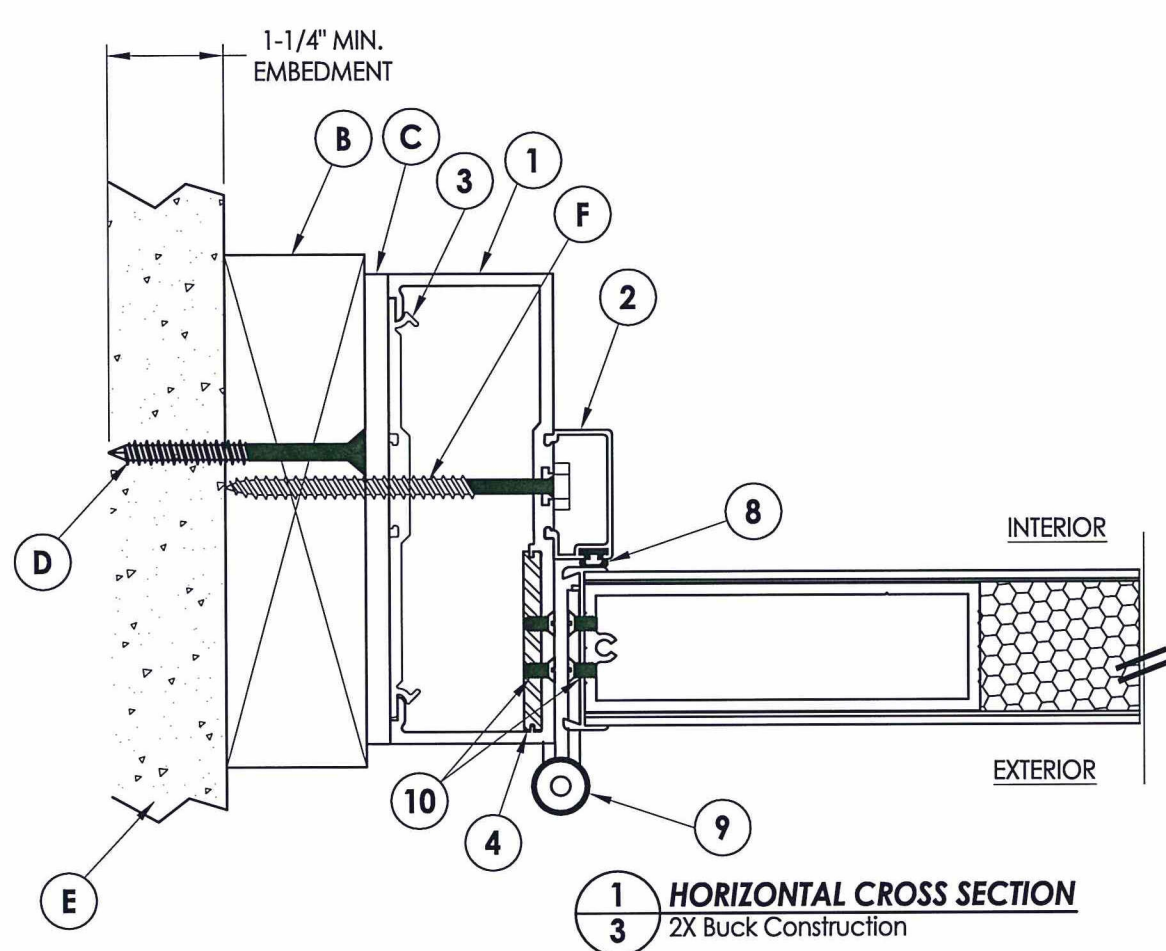
R.W. BUILDING CONSULTANTS, INC.
 P.O. Box 230, Valrico, FL 33595
 Phone No.: 813.659.9197
 FBPE C.A. No. 9813

PRODUCT: CLINE DOORS
 PART OR ASSEMBLY:
 DOOR PANEL DETAILS
 AND GLAZING DETAIL

REVISIONS	
NO.	DATE
2	9/9/15
1	1/27/15

DATE: 9/5/13
 SCALE: N.T.S.
 DWG. BY: JK
 CHK. BY: LFS
 DRAWING NO.: FL-6336.7
 SHEET 2 OF 9

Z:\Clients\Cline Aluminum Doors PERMANENT\A - Florida Product Approvals\FL-6336\C - Drawings\Current\FL-6336.5-8.dwg, 3.3

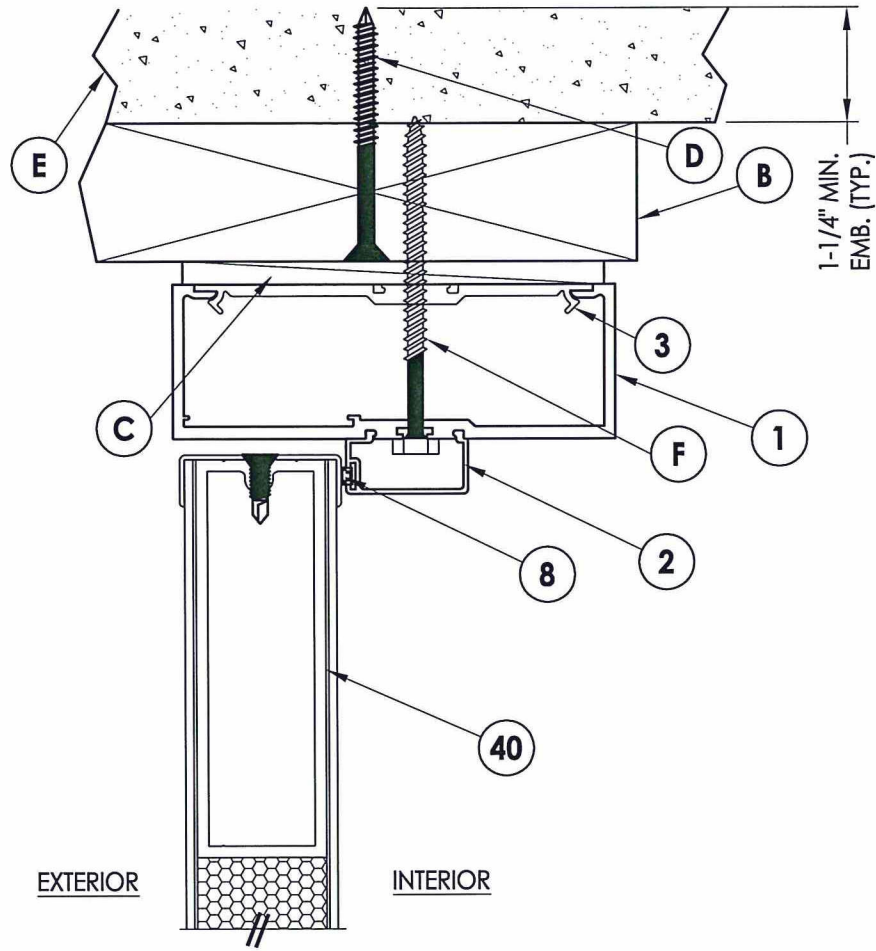


Documents Prepared By:
Lyndon F. Schmidt
P.E. No. 43409

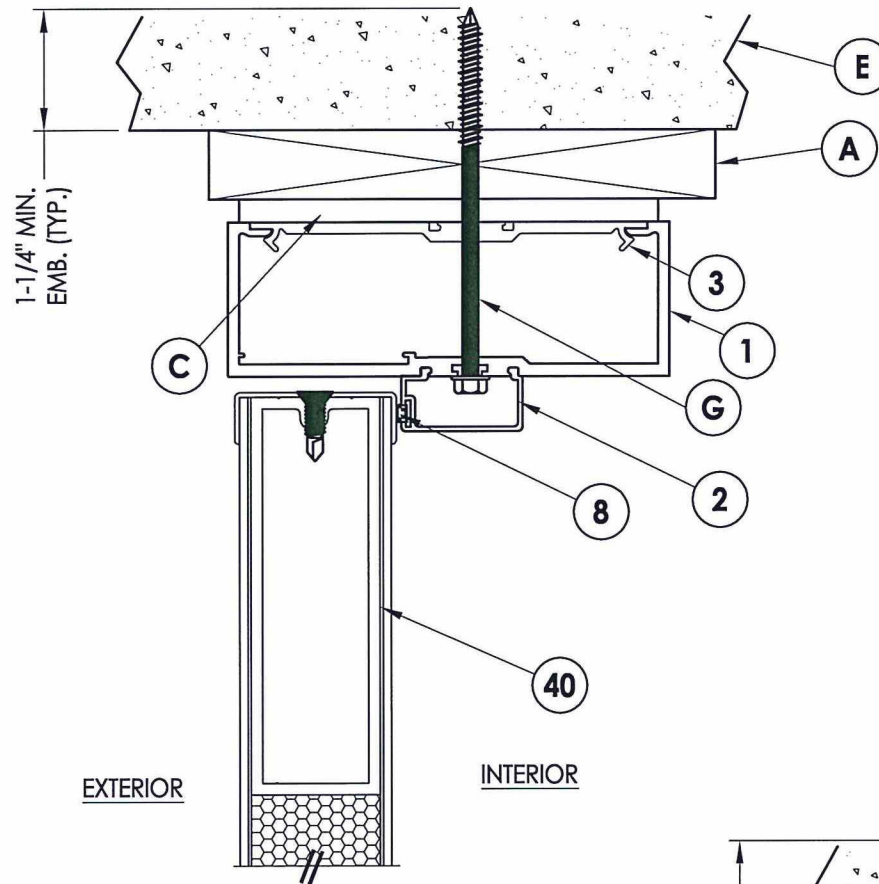
9.14.15

RW
BUILDING CONSULTANTS, INC.
P.O. Box 230, Valrico, FL 33595
Phone No.: 813.659.9197
FBPE C.A. No. 9813

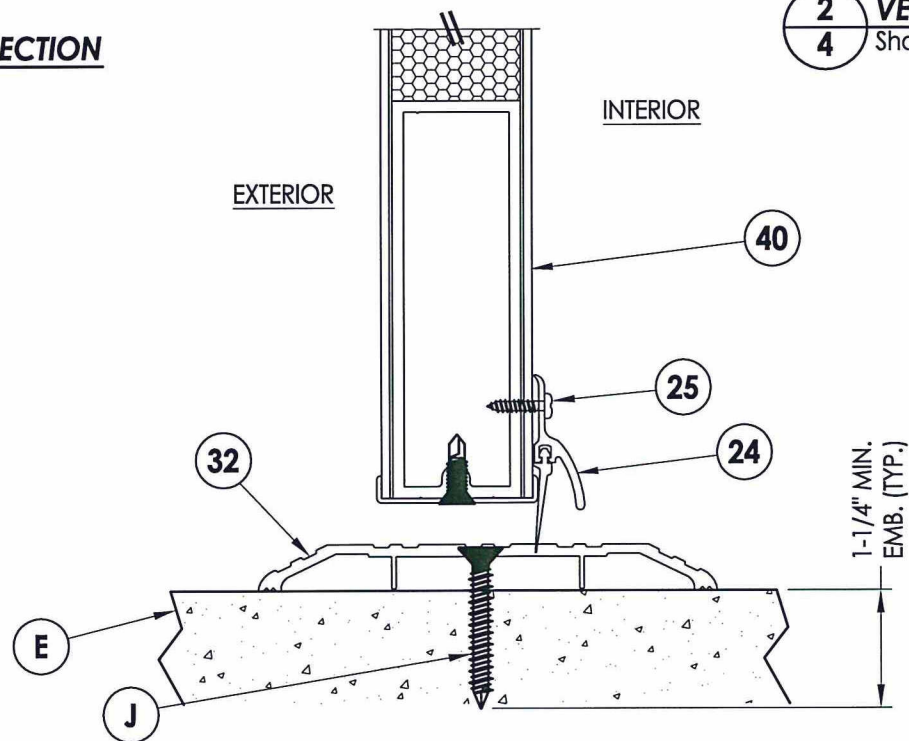
PRODUCT:	CLINE DOORS	
PART OR ASSEMBLY:	HORIZONTAL CROSS SECTIONS	
DATE:	9/5/13	
SCALE:	N.T.S.	
DWG. BY:	JK	
CHK. BY:	LFS	
DRAWING NO.:	FL-6336.7	
SHEET	3 of 9	
NO.	DATE	BY
2	9/9/15	JK
1	1/27/15	FBC
REVISIONS		



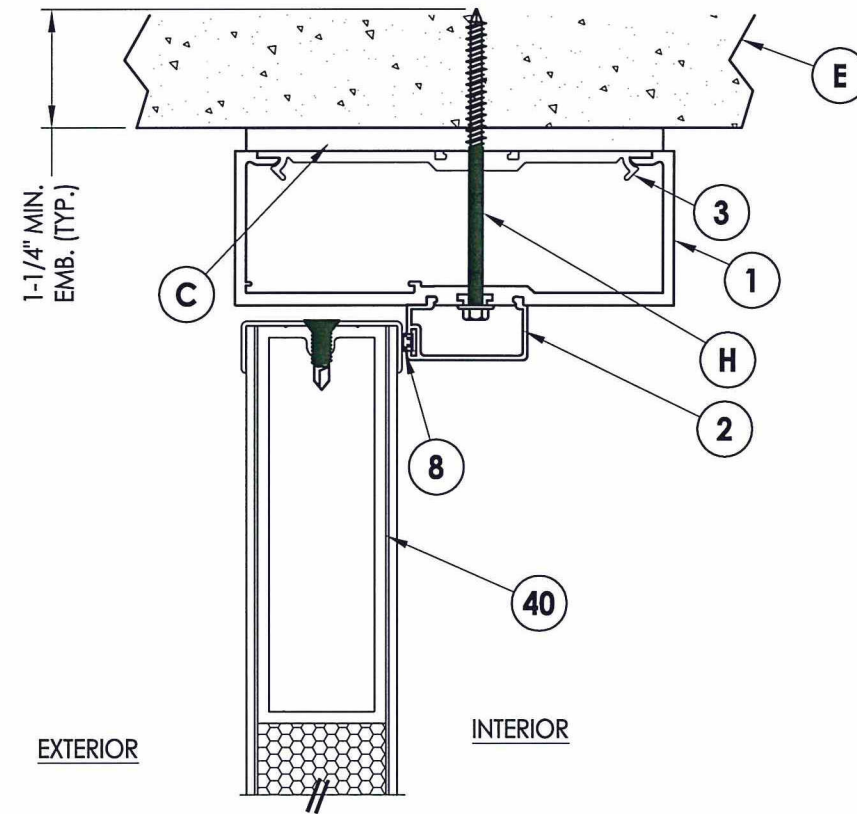
1 VERTICAL CROSS SECTION
4 2X Buck Construction



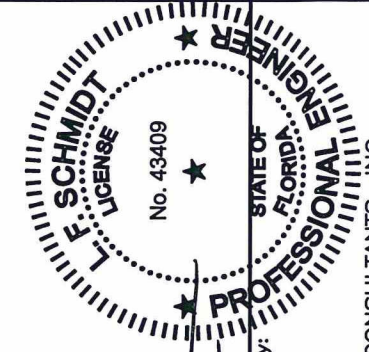
2 VERTICAL CROSS SECTION
4 Shown w/1X sub-buck



4 VERTICAL CROSS SECTION
4



3 VERTICAL CROSS SECTION
4 Direct to Masonry



LFS
 7.14.15

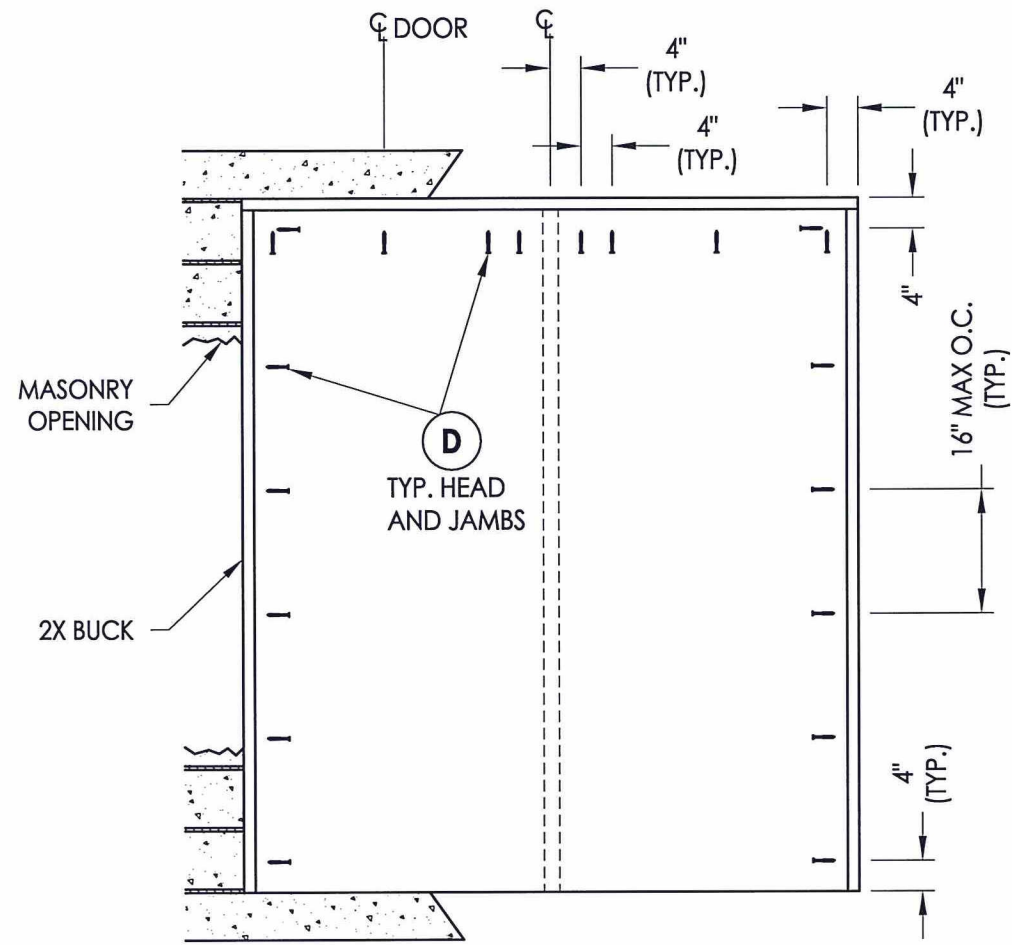
Documents Prepared By:
 Lyndon F. Schmidt
 P.E. No. 43409

RW
 BUILDING CONSULTANTS, INC.
 P.O. Box 230, Valrico, FL 33595
 Phone No.: 813.659.9197
 FBPE C.A. No. 9813

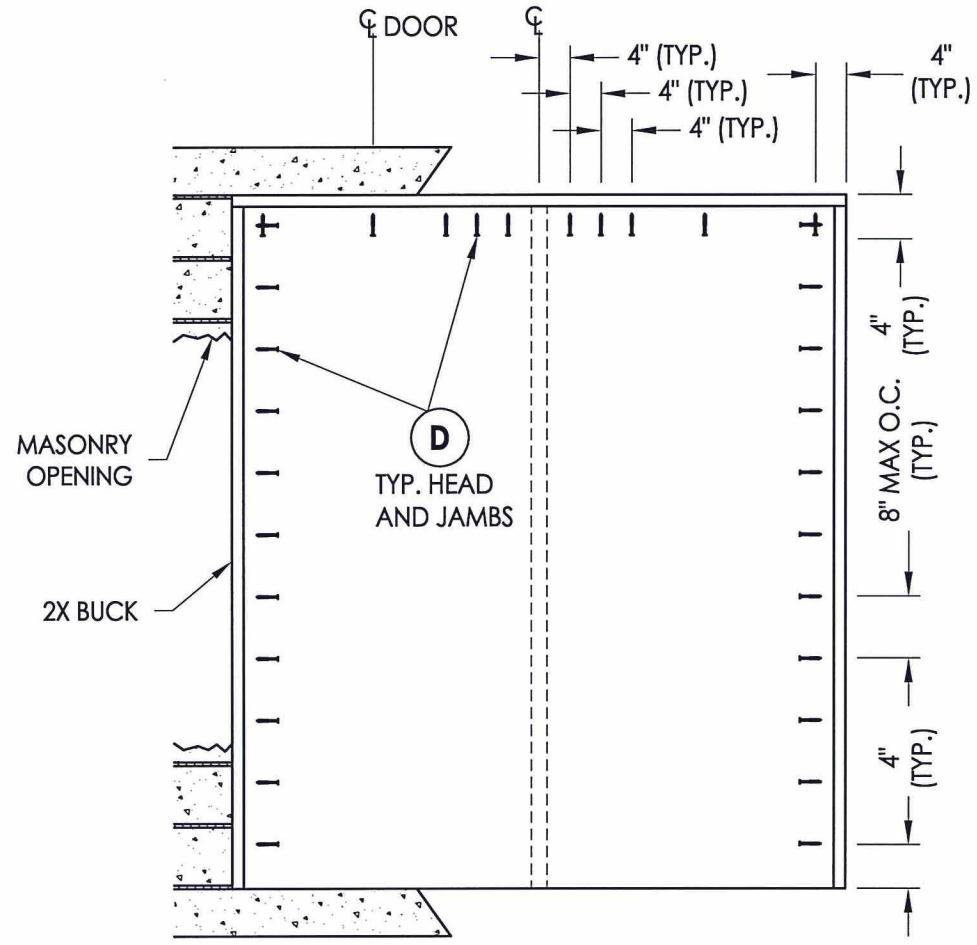
PRODUCT:	CLINE DOORS
PART OR ASSEMBLY:	VERTICAL CROSS SECTIONS

REVISIONS	
NO.	DATE
2	9/9/15
1	1/27/15
JK	ADD OPAQUE DOOR & NEW SIZE
JK	UPDATE TO 5TH ED. (2014) FBC
BY	

DATE:	9/5/13
SCALE:	N.T.S.
DWG. BY:	JK
CHK. BY:	LFS
DRAWING NO.:	FL-6336.7
SHEET	4 OF 9



BUCK ANCHORING
Max. D.P. <= 55 PSF



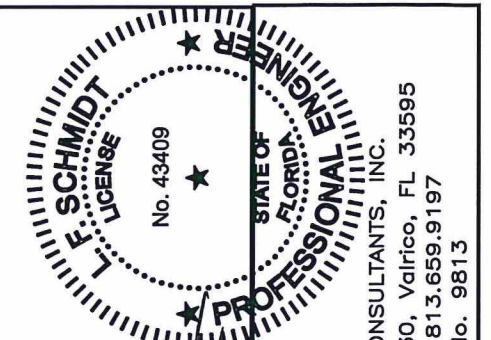
BUCK ANCHORING
Max. D.P. <= 90 PSF

MAX. FRAME DIMENSION 76" X 88.0"

CONCRETE ANCHOR NOTES:

- Concrete anchor locations at the corners may be adjusted to maintain the min. edge distance to mortar joints.
- Concrete anchor locations noted as "MAX. ON CENTER" must be adjusted to maintain the min. edge distance to mortar joints, additional concrete anchors may be required to ensure the "MAX. ON CENTER" dimension are not exceeded.
- Concrete anchor table:

ANCHOR TYPE	ANCHOR SIZE	MIN. EMBEDMENT	MIN. CLEARANCE TO MASONRY EDGE	MIN. CLEARANCE TO ADJACENT ANCHOR
ITW BUILDEX TAPCON®	1/4"	1-1/4"	2-1/2"	4"
ELCO ULTRACON®	1/4"	1-1/4"	2-1/2"	4"



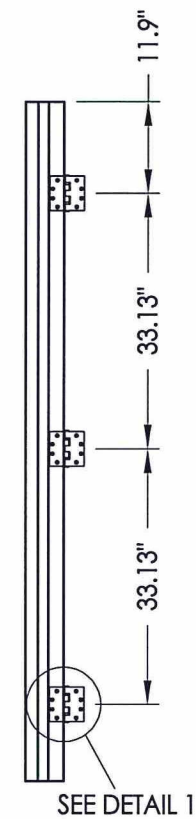
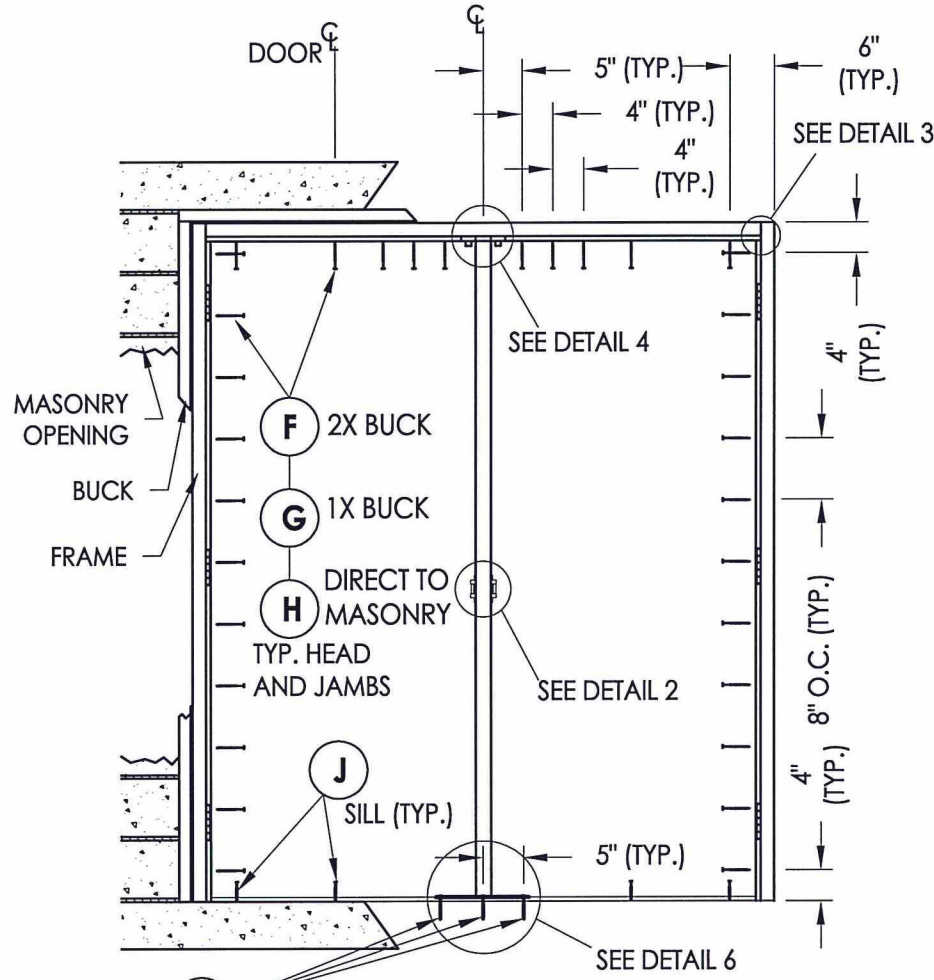
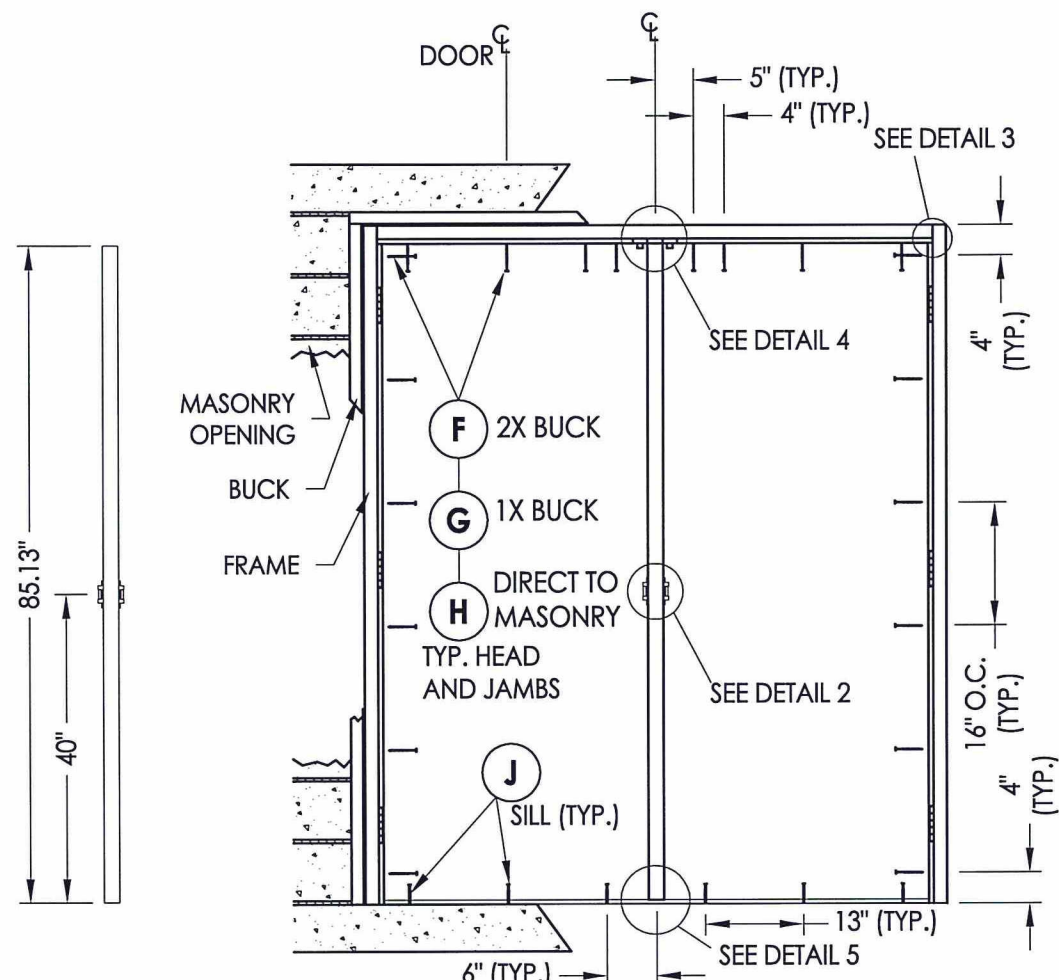
Documents Prepared By:
Lyndon F. Schmidt
P.E. No. 43409
R.W.
BUILDING CONSULTANTS, INC.
P.O. Box 230, Valrico, FL 33595
Phone No.: 813.659.9197
FBPE C.A. No. 9813

PRODUCT: CLINE DOORS
PART OR ASSEMBLY: BUCK ANCHORING

NO.	DATE	REVISIONS
2	9/9/15	ADD OPAQUE DOOR & NEW SIZE JK
1	1/27/15	UPDATE TO 5TH ED. (2014) FBC JK
		BY

DATE: 9/5/13
SCALE: N.T.S.
DWG. BY: JK
CHK. BY: LFS
DRAWING NO.: FL-6336.7
SHEET 5 OF 9

R:\Clients\Cline Aluminum Doors PERMANENT\A - Florida Product Approvals\FL-6336\C - Drawings\Current\FL-6336.5-8.dwg, 6.3



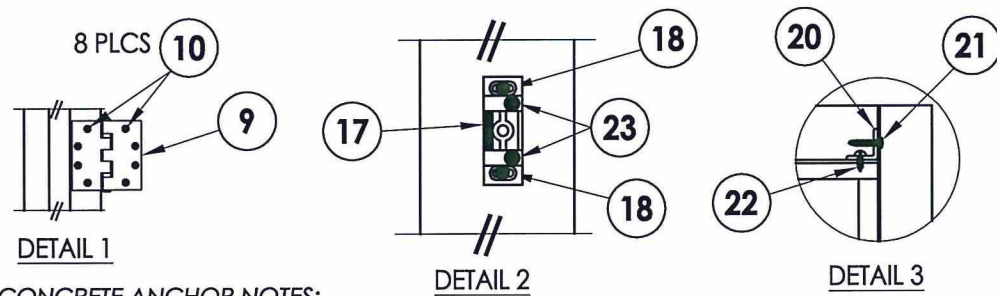
LATCH MULLION

FRAME ANCHORING
Max. D.P. <= 55 PSF

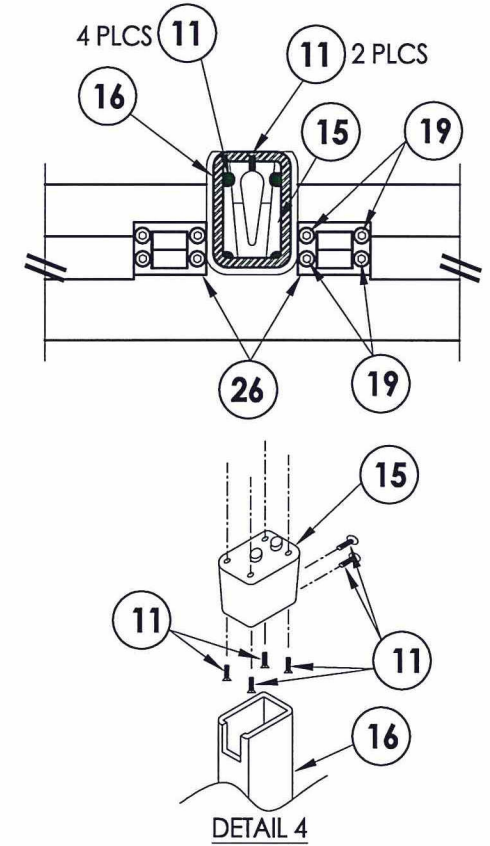
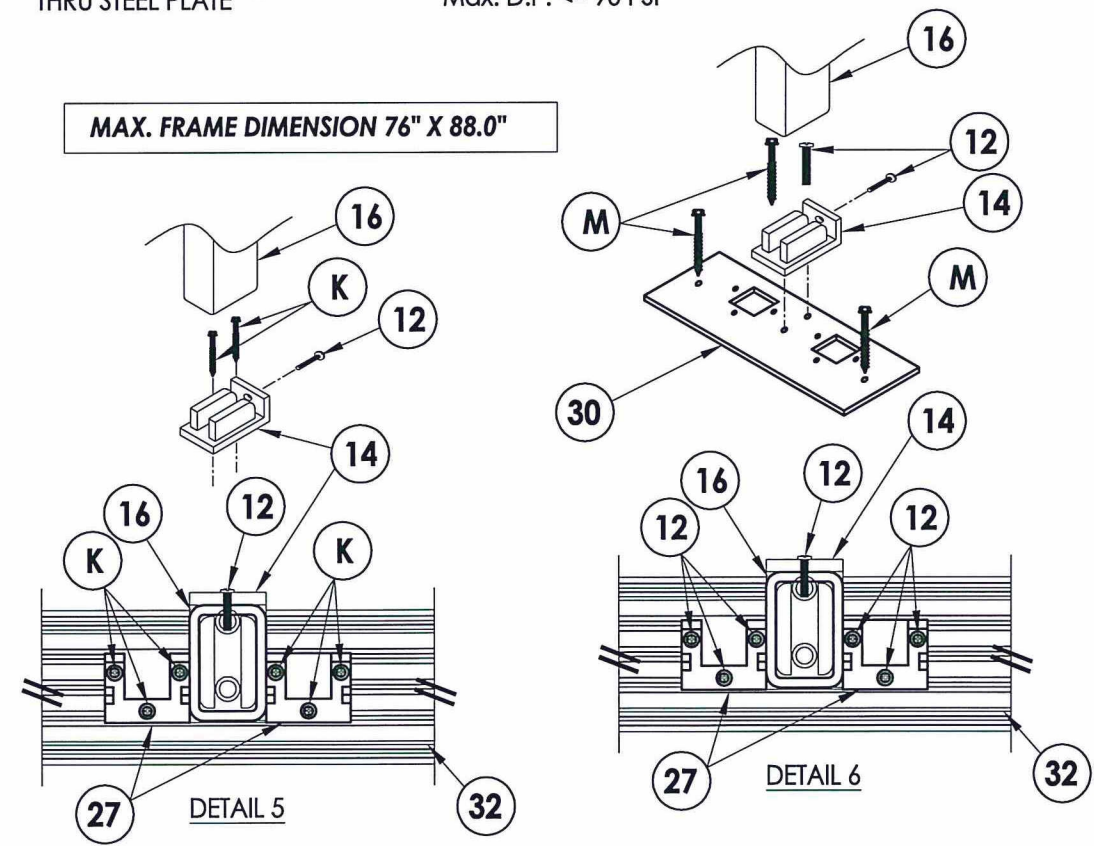
SILL ANCHORS THRU STEEL PLATE

FRAME ANCHORING
Max. D.P. <= 90 PSF

HINGE JAMB



MAX. FRAME DIMENSION 76" X 88.0"



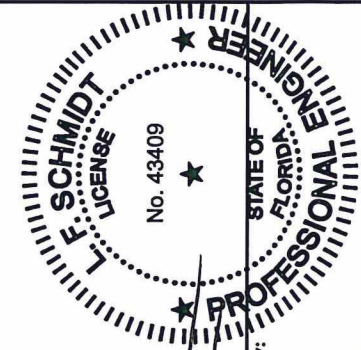
CONCRETE ANCHOR NOTES:

- Concrete anchor locations at the corners may be adjusted to maintain the min. edge distance to mortar joints.
- Concrete anchor locations noted as "MAX. ON CENTER" must be adjusted to maintain the min. edge distance to mortar joints, additional concrete anchors may be required to ensure the "MAX. ON CENTER" dimension are not exceeded.
- Concrete anchor table:

ANCHOR TYPE	ANCHOR SIZE	MIN. EMBEDMENT	MIN. CLEARANCE TO MASONRY EDGE	MIN. CLEARANCE TO ADJACENT ANCHOR
ITW BUILDDEX TAPCON®	1/4"	1-1/4"	2-1/2"	4"
ELCO ULTRACON®	1/4"	1-1/4"	2-1/2"	4"
	3/16"	1-3/4"	2-1/2"	1-3/4"
	5/16"	1-3/4"	2-1/2"	5"

WOOD SCREW INSTALLATION NOTES:

- Maintain a minimum 5/8" edge distance, 1" end distance, & 1" o.c. spacing of wood screws to prevent the splitting of wood.

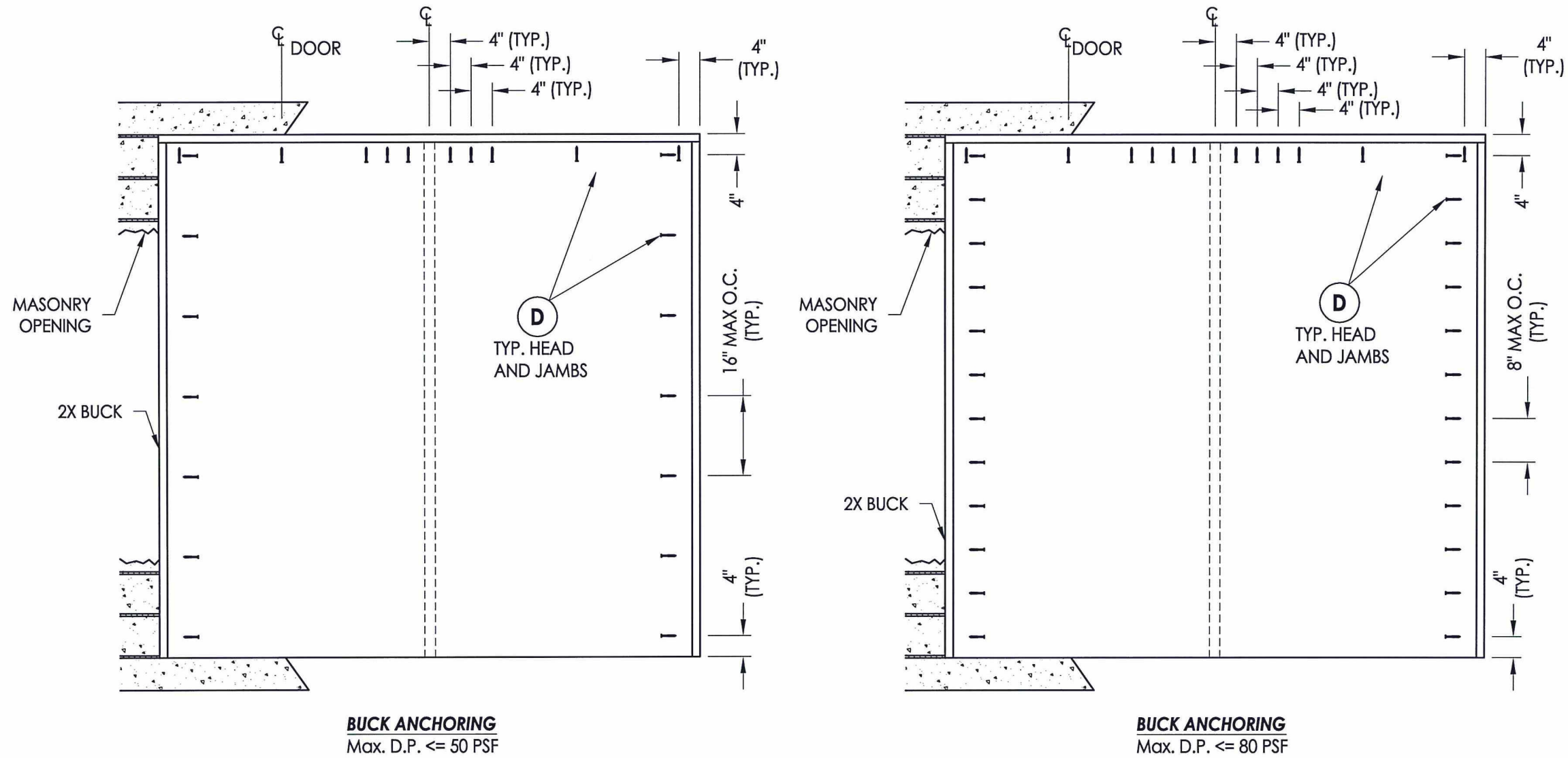


Documents Prepared By:
Lyndon F. Schmidt
P.E. No. 43409
LFS
7.14.15

R.W. BUILDING CONSULTANTS, INC.
P.O. Box 230, Valrico, FL 33595
Phone No.: 813.659.9197
FBPE C.A. No. 9813

PRODUCT:	CLINE DOORS	
PART OR ASSEMBLY:	FRAME ANCHORING	
NO.	DATE	BY
2	9/9/15	JK
1	1/27/15	FBC
REVISIONS		
DATE:	9/5/13	
SCALE:	N.T.S.	
DWG. BY:	JK	
CHK. BY:	LFS	
DRAWING NO.:	FL-6336.7	
SHEET	6	OF 9

© 2013 R.W. BUILDING CONSULTANTS INC.

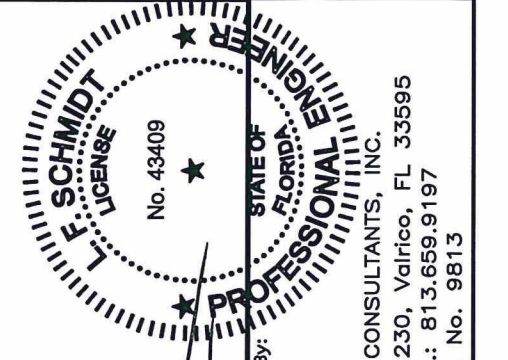


MAX. FRAME DIMENSION 99.5" X 98.0"

CONCRETE ANCHOR NOTES:

1. Concrete anchor locations at the corners may be adjusted to maintain the min. edge distance to mortar joints.
2. Concrete anchor locations noted as "MAX. ON CENTER" must be adjusted to maintain the min. edge distance to mortar joints, additional concrete anchors may be required to ensure the "MAX. ON CENTER" dimension are not exceeded.
3. Concrete anchor table:

ANCHOR TYPE	ANCHOR SIZE	MIN. EMBEDMENT	MIN. CLEARANCE TO MASONRY EDGE	MIN. CLEARANCE TO ADJACENT ANCHOR
ITW BUILDEX TAPCON®	1/4"	1-1/4"	2-1/2"	4"
ELCO ULTRACON®	1/4"	1-1/4"	2-1/2"	4"



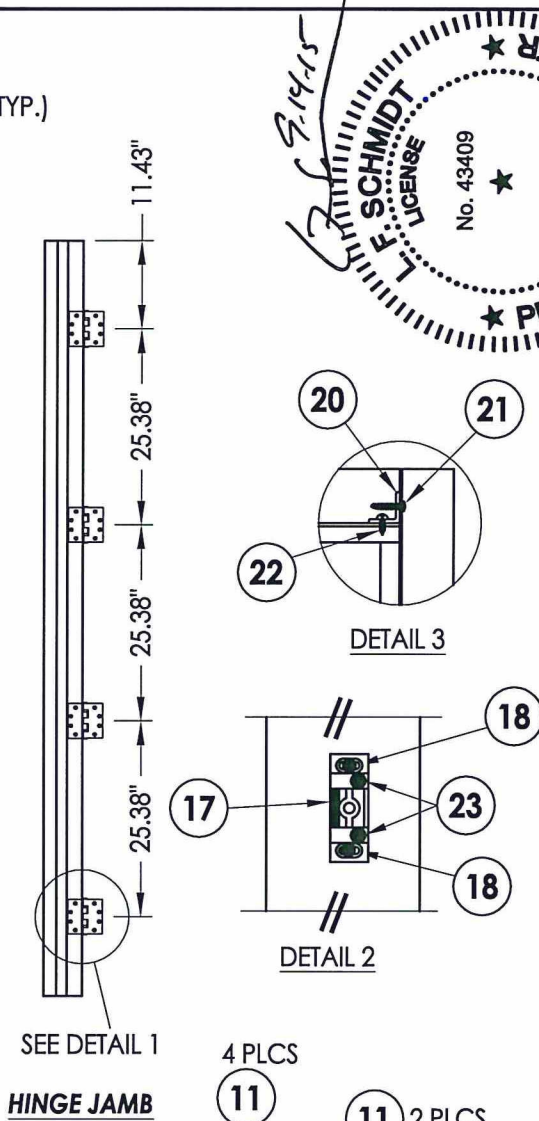
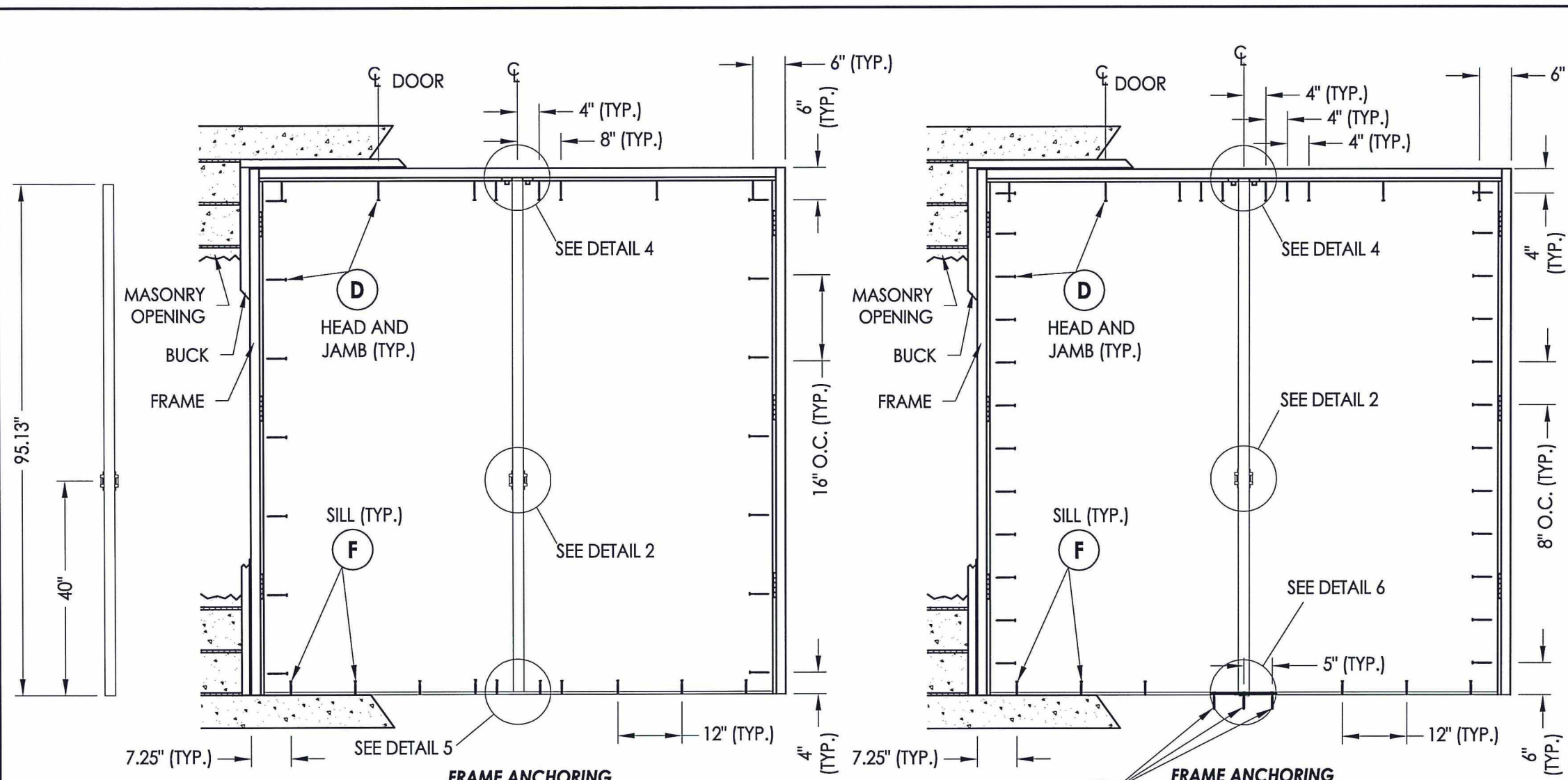
Documents Prepared By:
Lyndon F. Schmidt
P.E. No. 43409

RW
BUILDING CONSULTANTS, INC.
P.O. Box 230, Valrico, FL 33595
Phone No.: 813.659.9197
FBPE C.A. No. 9813

PRODUCT:	CLINE DOORS	
PART OR ASSEMBLY:	BUCK ANCHORING	
NO.	DATE	BY
2	9/9/15	JK
1	1/27/15	JK
REVISIONS		

DATE: 9/5/13
SCALE: N.T.S.
DWG. BY: JK
CHK. BY: LFS
DRAWING NO.: FL-6336.7
SHEET 7 OF 9

R:\Clients\Cline Aluminum Doors PERMANENTVA - Florida Product Approvals\FL-6336\C - Drawings\Current\FL-6336.5-8.dwg, 6.3 (3)



LATCH MULLION
FRAME ANCHORING
 Max. D.P. <= 50 PSF

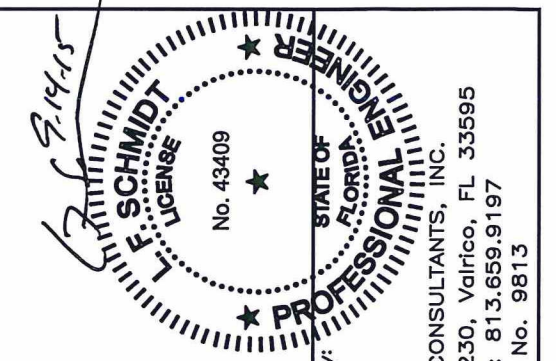
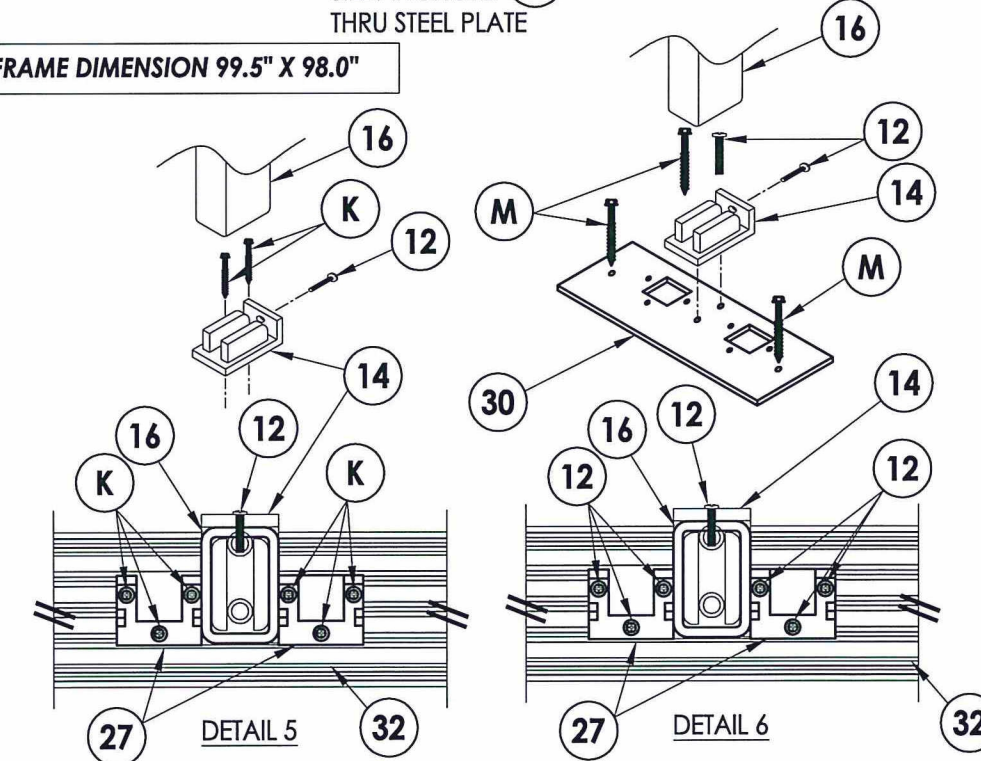
FRAME ANCHORING
 Max. D.P. <= 80 PSF

MAX. FRAME DIMENSION 99.5" X 98.0"

- CONCRETE ANCHOR NOTES:**
- Concrete anchor locations at the corners may be adjusted to maintain the min. edge distance to mortar joints.
 - Concrete anchor locations noted as "MAX. ON CENTER" must be adjusted to maintain the min. edge distance to mortar joints, additional concrete anchors may be required to ensure the "MAX. ON CENTER" dimension are not exceeded.
 - Concrete anchor table:

ANCHOR TYPE	ANCHOR SIZE	MIN. EMBEDMENT	MIN. CLEARANCE TO MASONRY EDGE	MIN. CLEARANCE TO ADJACENT ANCHOR
ITW BUILDEX TAPCON®	1/4"	1-1/4"	2-1/2"	4"
ELCO ULTRACON®	1/4"	1-1/4"	2-1/2"	4"
	3/16"	1-3/4"	2-1/2"	1-3/4"
	5/16"	1-3/4"	2-1/2"	5"

- WOOD SCREW INSTALLATION NOTES:**
- Maintain a minimum 5/8" edge distance, 1" end distance, & 1" o.c. spacing of wood screws to prevent the splitting of wood.



Documents Prepared By:
 Lyndon F. Schmidt
 P.E. No. 43409

R.W. BUILDING CONSULTANTS, INC.
 P.O. Box 230, Valrico, FL 33595
 Phone No.: 813.659.9197
 FBPE C.A. No. 9813

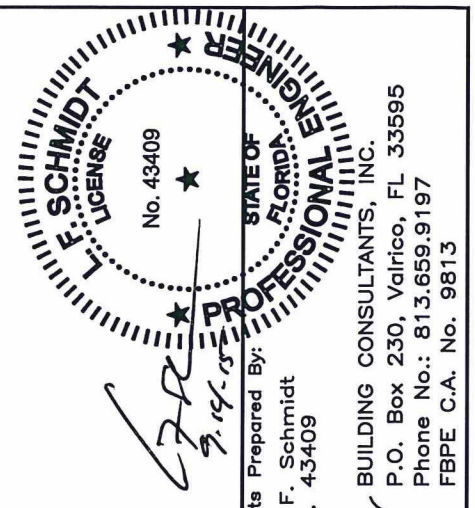
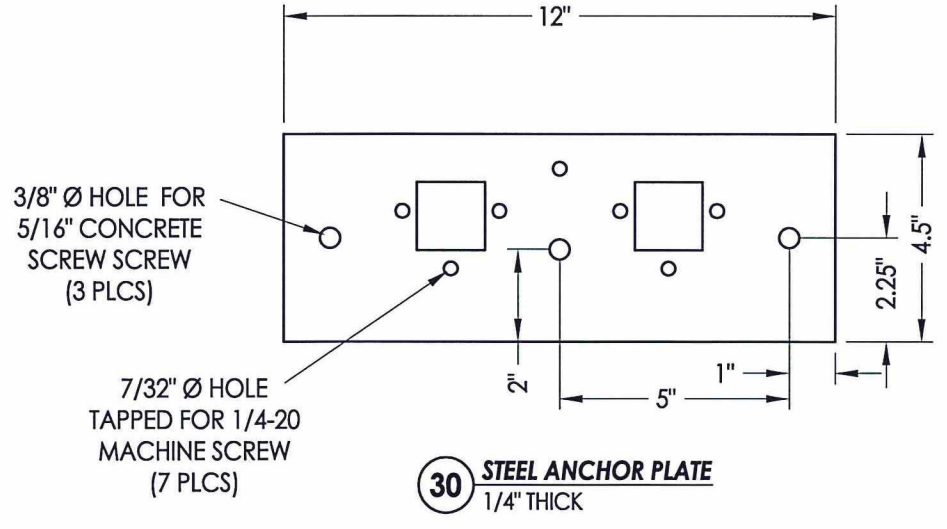
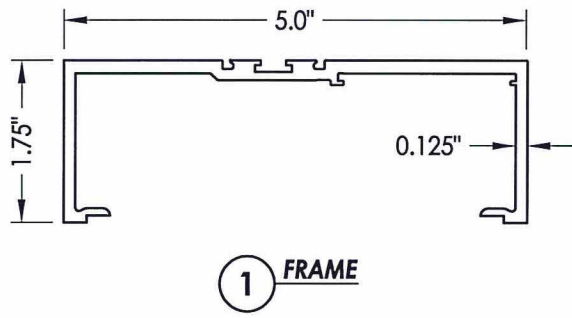
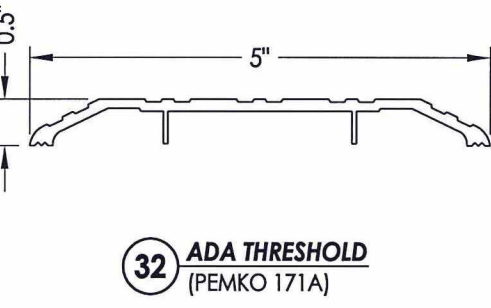
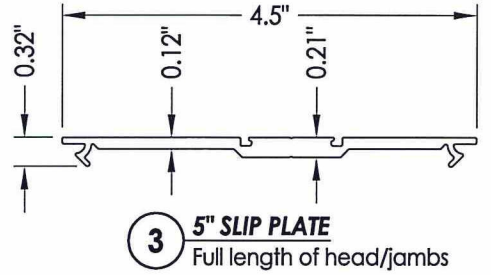
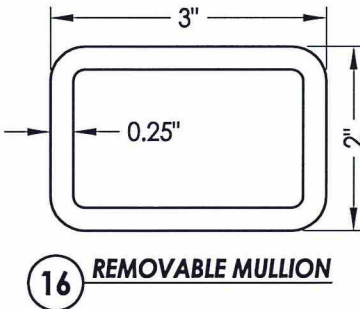
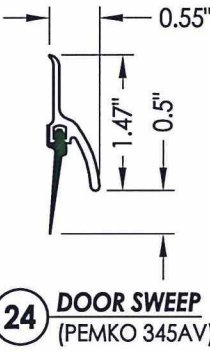
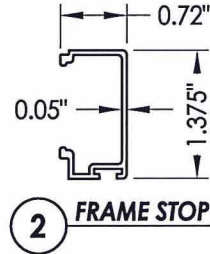
PRODUCT: CLINE DOORS
 PART OR ASSEMBLY: FRAME ANCHORING

NO.	DATE	REVISIONS
2	9/9/15	ADD OPAQUE DOOR & NEW SIZE
1	1/27/15	UPDATE TO 5TH ED. (2014) FBC

DATE: 9/5/13
 SCALE: N.T.S.
 DWG. BY: JK
 CHK. BY: LFS
 DRAWING NO.: FL-6336.7
 SHEET 8 OF 9

BILL OF MATERIALS

ITEM #	DESCRIPTION	MATERIAL
A	1X BUCK SG >= 0.55	WOOD
B	2X BUCK SG >= 0.55	WOOD
C	1/4" MAX. SHIM SPACE	-
D	1/4" X 2-3/4" PFH ELCO OR ITW CONCRETE SCREW	STEEL
E	MASONRY - 3,000 PSI MIN. CONCRETE CONFORMING TO ACI 301 OR HOLLOW BLOCK CONFORMING TO ASTM C90	CONCRETE
F	1/4" X 3-1/2" HH LAG SCREW	STEEL
G	1/4" X 4" HWH ELCO OR ITW CONCRETE SCREW	STEEL
H	1/4" x 3-1/4" HWH ELCO OR ITW CONCRETE SCREW	STEEL
J	1/4" x 1-3/4" HWH ELCO OR ITW CONCRETE SCREW	STEEL
K	3/16" x 2-1/4" PFH ELCO CONCRETE SCREW	STEEL
M	5/16" x 2-1/4" HWH ELCO CONCRETE SCREW	STEEL
1	FRAME	ALUM 6063 T5
2	FRAME STOP	ALUM 6063 T5
3	5" SLIP PLATE	ALUM 6063 T5
4	HINGE REINFORCEMENT	ALUM
7	WEATHERSTRIP	PVC
8	WOOL PILE WEATHERSTRIP	-
9	4-1/2" X 4-1/2" HINGE	STEEL
10	1/4 - 20 x 1/2" PFH MACHINE SCREW	STEEL
11	1/4 - 20 x 5/8" PFH MACHINE SCREW	STEEL
12	1/4 - 20 x 1-1/4" PPH MACHINE SCREW	STEEL
14	BOTTOM MULLION BRACKET	STEEL
15	TOP MULLION BRACKET	STEEL
16	REMOVABLE MULLION (YALE M200FWS)	STEEL
17	LATCH STRIKE PLATE (YALE 757)	STEEL
18	#12-24 X 2" FH MACHINE SCREW	STEEL
19	1/4 - 20 x 1" PFH MACHINE SCREW	STEEL
20	CORNER REINFORCEMENT (1" X 1" X 1/2" X 4.75" LONG ANGLE)	ALUM
21	#10 X 1" PPH SMS	STEEL
22	#10 X 1/2" PPH SMS	STEEL
23	#8 X 2" CAP SCREW	STEEL
24	DOOR SWEEP (PEMKO 345AV)	-
25	#6 X 5/8" PPH SMS	STEEL
26	HEAD LATCH	STEEL
27	SILL LATCH (YALE 795)	STEEL
30	STEEL PLATE (1/4" x 4-1/2" x 12") ASTM A36	STEEL
32	ADA THRESHOLD (PEMKO 171A)	ALUM
40	DOOR PANEL (SEE DOOR PANEL DETAILS)	-



Documents Prepared By:
Lyndon F. Schmidt
P.E. No. 43409

RW BUILDING CONSULTANTS, INC.
P.O. Box 230, Vairico, FL 33595
Phone No.: 813.659.9197
FBPE C.A. No. 9813

PRODUCT: CLINE DOORS

PART OR ASSEMBLY: BILL OF MATERIALS & COMPONENTS

NO.	DATE	REVISIONS
2	9/9/15	ADD OPAQUE DOOR & NEW SIZE JK
1	1/27/15	UPDATE TO 5TH ED. (2014) FBC JK
		BY

DATE: 9/5/13

SCALE: N.T.S.

DWG. BY: JK

CHK. BY: LFS

DRAWING NO.: FL-6336.7

SHEET 9 OF 9